

WELCOME TO THE WATCHUNG PUBLIC LIBRARY PROJECT



WATCHUNG PUBLIC LIBRARY PROJECT



EXISTING LIBRARY FACTS

- Building is a 4-story wood frame building.
- Built circa 1945 and was the home of Mr. Harlan Pratt.
- Watchung Public Library has occupied the “Pratt” house since 1976.
- Approximate size of 8,000 SF.
- The Library houses approximately 36,000 volumes (crowded).

WATCHUNG PUBLIC LIBRARY PROJECT

DEFICIENCIES/LIMITATIONS



- Shelving covers windows and doors.
- Very limited public seating.
- Poor supervision from main desk.
- Only 1 internet terminal for public use.
- No space to display young adult print & music collections.
- No leisure reading areas.
- No elevator in 3-4 story building.
- No fire protection in wood structure/Library.
- No handicap accessibility from lower portion of site.
- Building does not meet current codes and standards.



- Not enough space for children's programs/activities.
- Extremely small children's area.
- Bookshelves out of children's reach.
- No supervision.
- No space for tutoring.
- No space for homework or research.
- No space for programs.
- Must discard viable materials to make room for current titles.
- ADA clearance between shelves not possible.

WATCHUNG PUBLIC LIBRARY PROJECT

DEFICIENCIES/LIMITATIONS

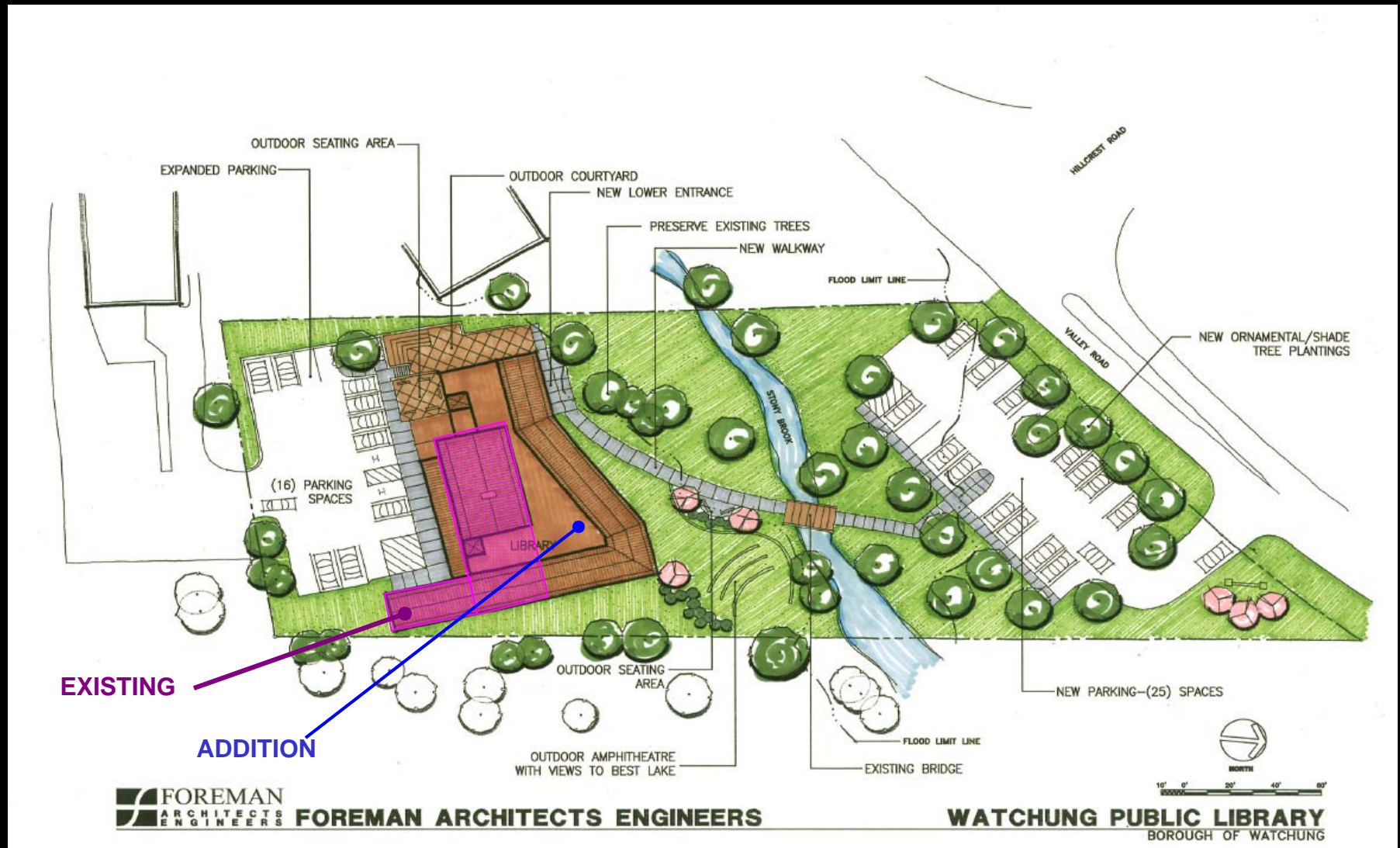


- Limited space for conferences, meetings, etc.
- Poor lighting.
- No fire egress per code from upper floors.
- Basement has no internal communication with rest of the building.
- Senior center has no handicap access to/from the parking lot.



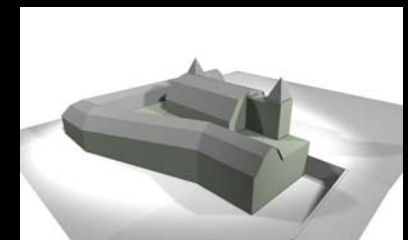
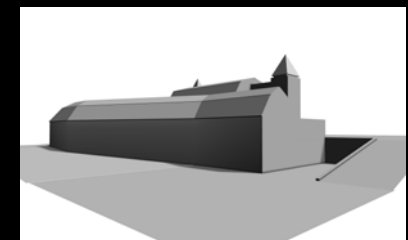
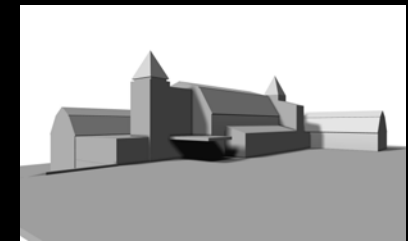
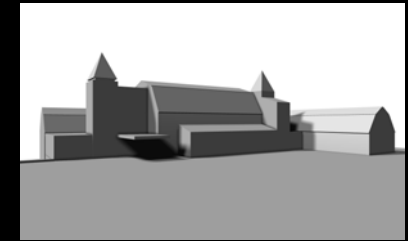
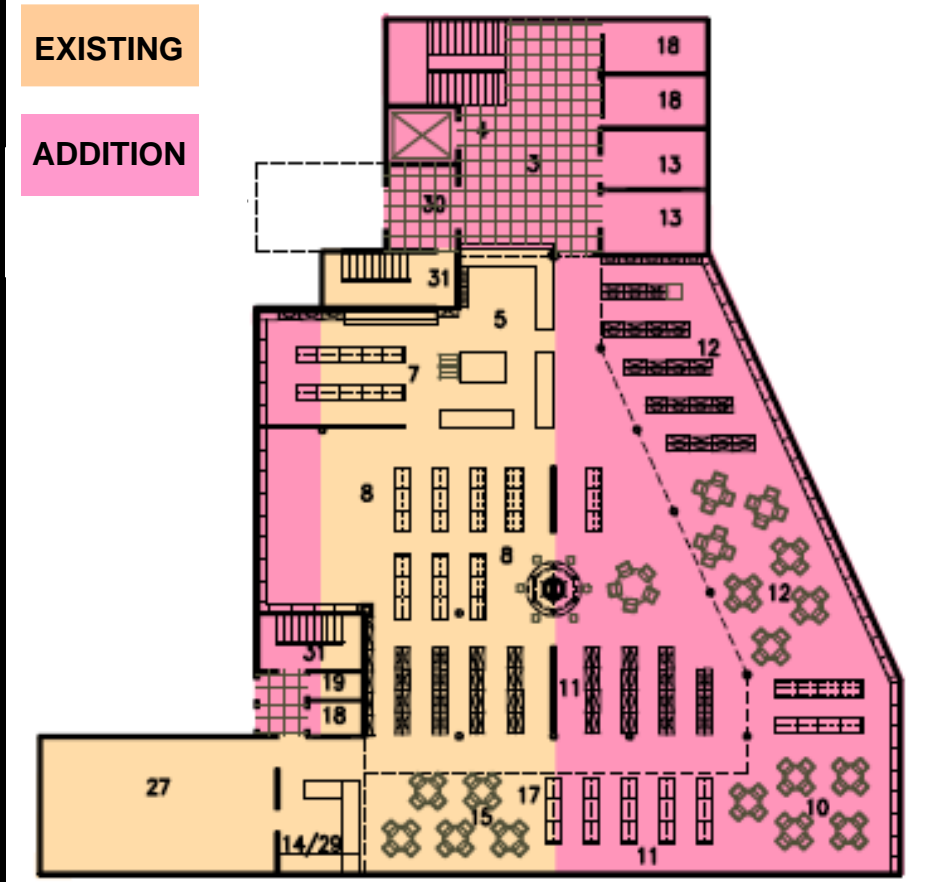
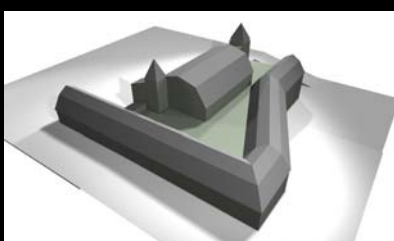
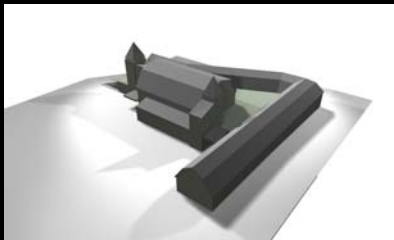
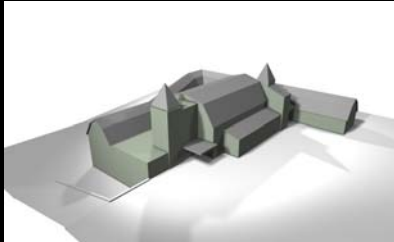
- Attic used as book and general storage.
- No elevator (ADA) access to stored items.
- No fire protection (flammable storage).
- Books stored in bathtub.
- Stored material difficult to access so remains underutilized.
- Wood floor structure may be compromised, if stored, more storage accumulated.

WATCHUNG PUBLIC LIBRARY PROJECT



SITE PLAN

WATCHUNG PUBLIC LIBRARY PROJECT

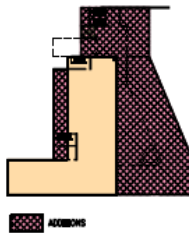


FIRST FLOOR, MAIN LIBRARY AND MASS MODELS

WATCHUNG PUBLIC LIBRARY PROJECT

KEY NOTES:

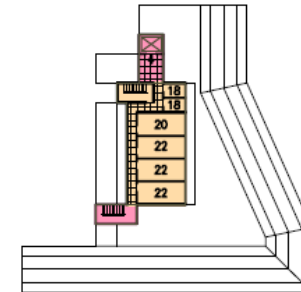
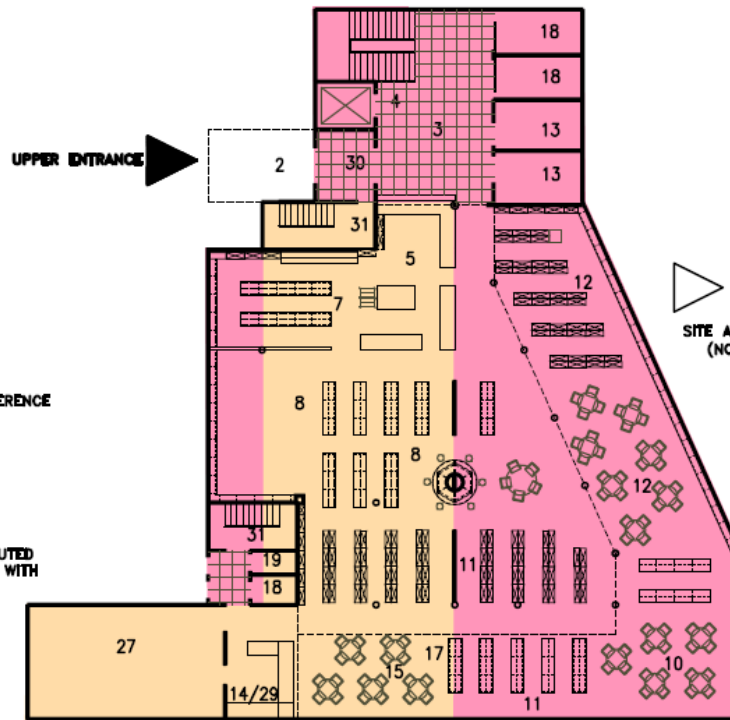
1. LOWER ENTRANCE
 2. UPPER ENTRANCE
 3. LOBBY
 4. ELEVATOR TO ALL FLOORS
 5. MAIN CIRCULATION DESK
 - 6.
 7. CIRCULATION/TECH SERVICE WORKROOM W/ GLASS WALLS
 8. CHILDREN'S LIBRARY
 9. CIRCULATION/TECH SERVICE WORKROOM .
 10. YOUNG ADULT AREA
 11. ADULT STACKS
 12. ADULT READING, COMPUTERS, AND MORE SHELVING
 13. TUTORS & QUIET STUDY AREAS W/GLASS FRONTS
 14. CAFE SERVING
 15. CAFE LOUNGE AND ADULT READING
 16. COMPUTERS
 17. PERIODICALS AND CURRENT MATERIALS
 18. TOILET ROOM
 19. CUSTODIAN ROOM
 20. STAFF LOUNGE/KITCHEN AND STORAGE.
 21. TABLE AND CHAIR STORAGE
 22. OFFICE
 23. ELECTRICAL & TECHNOLOGY ROOM
 24. MECHANICAL ROOM
 25. LIBRARY STORAGE ROOM
 26. KITCHEN AREA
 27. SENIOR CITIZEN'S MEETING ROOM/MULTI-PURPOSE CONFERENCE
 28. LARGE MEETING RM. (150 SEATING CAPACITY & 100 DINING CAPACITY/ USES= LECTURE SERIES; FILM; CRAFT SHOWS ; CONFERENCE CENTER,ETC)
 29. KITCHEN
 30. FOYER WITH BOOK DROP SLOT.
 31. FIRE EGRESS STAIR
 32. MOVIE & GAMING AREA
 33. CHILDRENS LIBRARY TABLE/CHAIR STORAGE.
- NOTE: COMPUTERS AND COMPUTER REFERENCE ARE DISTRIBUTED THROUGHOUT THE READING AREAS ON MOVEABLE FURNITURE WITH OUTLET LOCATIONS TO PERMIT MANY CONFIGURATIONS AND LOCATIONS.



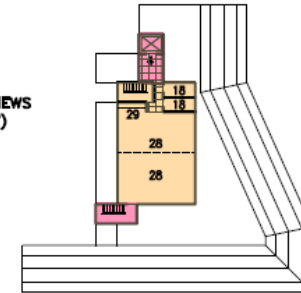
ADDITIONS

FIRST FLOOR

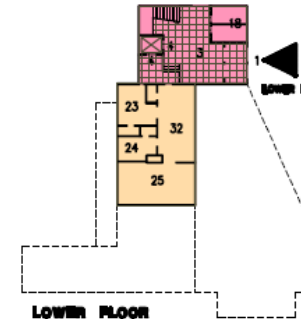
Capacity = 50,000 Tomes



ATTIC FLOOR



SECOND FLOOR



LOWER FLOOR

SITE AND STREAM VIEWS
(NORTHERN LIGHT)

LAKE VIEWS
(EASTERN LIGHT)



FOREMAN ARCHITECTS ENGINEERS

WATCHUNG PUBLIC LIBRARY PROJECT
BOROUGH OF WATCHUNG

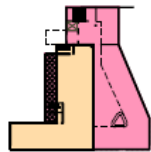
FOREMAN
ARCHITECTS
ENGINEERS
conceive - believe - achieve

FLOOR PLANS

WATCHUNG PUBLIC LIBRARY PROJECT

KEY NOTES:

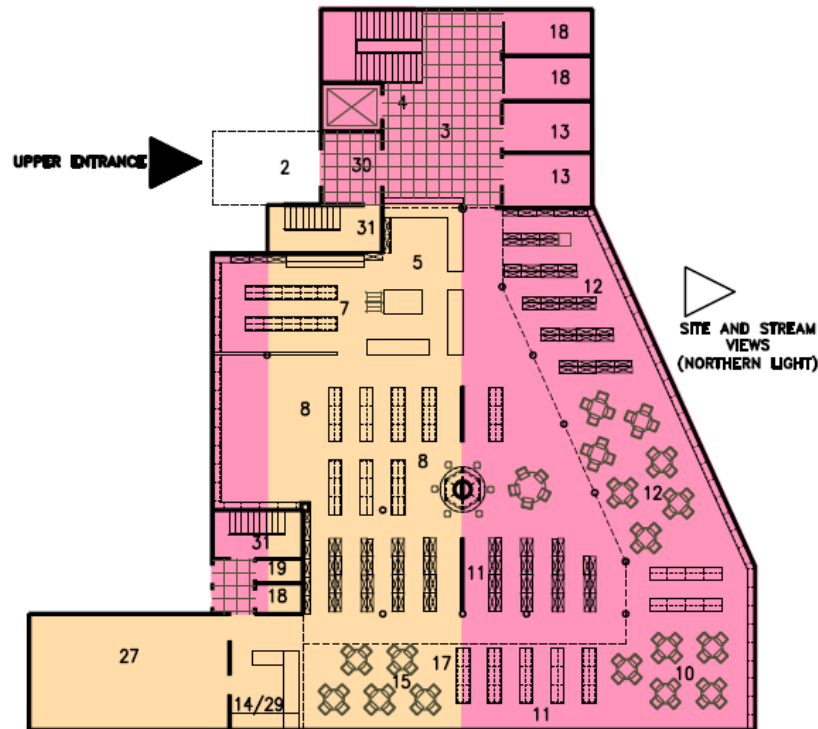
1. LOWER ENTRANCE
 2. UPPER ENTRANCE
 3. LOBBY
 4. ELEVATOR TO ALL FLOORS
 5. MAIN CIRCULATION DESK
 - 6.
 7. CIRCULATION/TECH SERVICE WORKROOM W/ GLASS WALLS
 8. CHILDREN'S LIBRARY
 9. CIRCULATION/TECH SERVICE WORKROOM .
 10. YOUNG ADULT AREA
 11. ADULT STACKS
 12. ADULT READING, COMPUTERS, AND MORE SHELVING
 13. TUTORS & QUIET STUDY AREAS W/GLASS FRONTS
 14. CAFE SERVING
 15. CAFE LOUNGE AND ADULT READING
 16. COMPUTERS
 17. PERIODICALS AND CURRENT MATERIALS
 18. TOILET ROOM
 19. CUSTODIAN ROOM
 20. STAFF LOUNGE/KITCHEN AND STORAGE.
 21. TABLE AND CHAIR STORAGE
 22. OFFICE
 23. ELECTRICAL & TECHNOLOGY ROOM
 24. MECHANICAL ROOM
 25. LIBRARY STORAGE ROOM
 26. KITCHEN AREA
 27. SENIOR CITIZEN'S MEETING ROOM/MULTI-PURPOSE CONFERENCE
 28. LARGE MEETING RM. (150 SEATING CAPACITY & 100 DINING CAPACITY/ USES= LECTURE SERIES; FILM; CRAFT SHOWS ; CONFERENCE CENTER,ETC)
 29. KITCHEN
 30. FOYER WITH BOOK DROP SLOT.
 31. FIRE EGRESS STAIR
 32. MOVIE & GAMING AREA
 33. CHILDRENS LIBRARY TABLE/CHAIR STORAGE.
- NOTE: COMPUTERS AND COMPUTER REFERENCE ARE DISTRIBUTED THROUGHOUT THE READING AREAS ON MOVEABLE FURNITURE WITH OUTLET LOCATIONS TO PERMIT MANY CONFIGURATIONS AND LOCATIONS.



FOREMAN ARCHITECTS ENGINEERS

FIRST FLOOR

Capacity = 50,000 Tomes



LAKE VIEWS
(EASTERN LIGHT)

DESIGN FEATURES AND SOLUTIONS :

1. UPPER AND LOWER ENTRANCES CONVERGE DIRECTLY ON THE MAIN DESK—SINGLE POINT OF SECURITY. MAIN STAIR ONLY CONNECTS LOWER AND UPPER ENTRANCES. VISITORS MUST GO PAST MAIN DESK TO ACCESS STAIR TO MORE PRIVATE UPPER FLOORS .

2. FIRST FLOOR AREA MAXIMIZED TO FIT ENTIRE PUBLIC LIBRARY AREAS ON ONE FLOOR LEVEL.

3. MAIN DESK :

---OVERSEES ENTIRE LIBRARY

---IS THE ONE POINT OF CONTROL FOR ENTRY AND EGRESS .

---DIRECTLY ADJACENT TO CHILDREN'S AREA FOR TIGHT SUPERVISION/SECURITY.

---OVERSEES AND SERVICES TUTOR AND CONFERENCE ROOMS - PATRONS NEED NOT GO THROUGH LIBRARY TO USE THESE .

THIS =SECURITY AND QUICK IN/OUT CONVENIENCE .

4. ALL READING AREAS FACE EAST LIGHT (WITH LAKE VIEWS) AND NORTH LIGHT (WITH SITE AND STREAM VIEWS).

5. CAFE CAN BE SHARED BY ADULT AND YOUNG ADULT READING AREAS AS WELL AS SENIORS RM. AND HAS PANORAMIC VIEWS OF SITE AND LAKE.

6. UPPER EXISTING FLOORS=PRIVATE OFFICES WORKROOMS AND THE MEETING ROOM.

7. EXISTING WOOD STAIR AND CHIMNEY ARE REMOVED TO CREATE OPEN CENTRAL FLOOR AREA AND TWO NEW FIRE STAIRS ARE BUILT AS REQUIRED BY CODES. ELEVATOR CONNECTS ALL FLOORS .

8. LOW PROFILE WITH RESIDENTIAL ROOF FACING RESIDENCES ABOVE LAKE (EAST).

9. REAR FACADE AT LOWER ENTRY FACES PICTURESQUE STONE BUILDING ACROSS ROAD AND ALSO HAS STONE FACE. 'REAR FRONT' FACE OF ADDITION IS PARALLEL TO VALLEY ROAD TO CREATE STRONG PRESENCE FROM ROAD.

10. WILL MEET ALL CURRENT APPLICABLE CODES , FIRE CODES AND STANDARDS.(ELEC/HVAC/PLUMBING/ADA...)

WATCHUNG PUBLIC LIBRARY PROJECT
BOROUGH OF WATCHUNG

FLOOR PLANS

FOREMAN
ARCHITECTS
ENGINEERS
conceive - believe - achieve

WATCHUNG PUBLIC LIBRARY PROJECT



FRONT ENTRANCE

WATCHUNG PUBLIC LIBRARY PROJECT



REAR ENTRANCE

WATCHUNG PUBLIC LIBRARY PROJECT

ESTIMATED COSTS

- Existing building Renovations/Alterations = 8,000 SF
- New Addition = ± 9,000 SF
- Estimated Total Final Area = ± 17,000 SF
- Estimated Cost Of All Bids = ± \$4,230,000